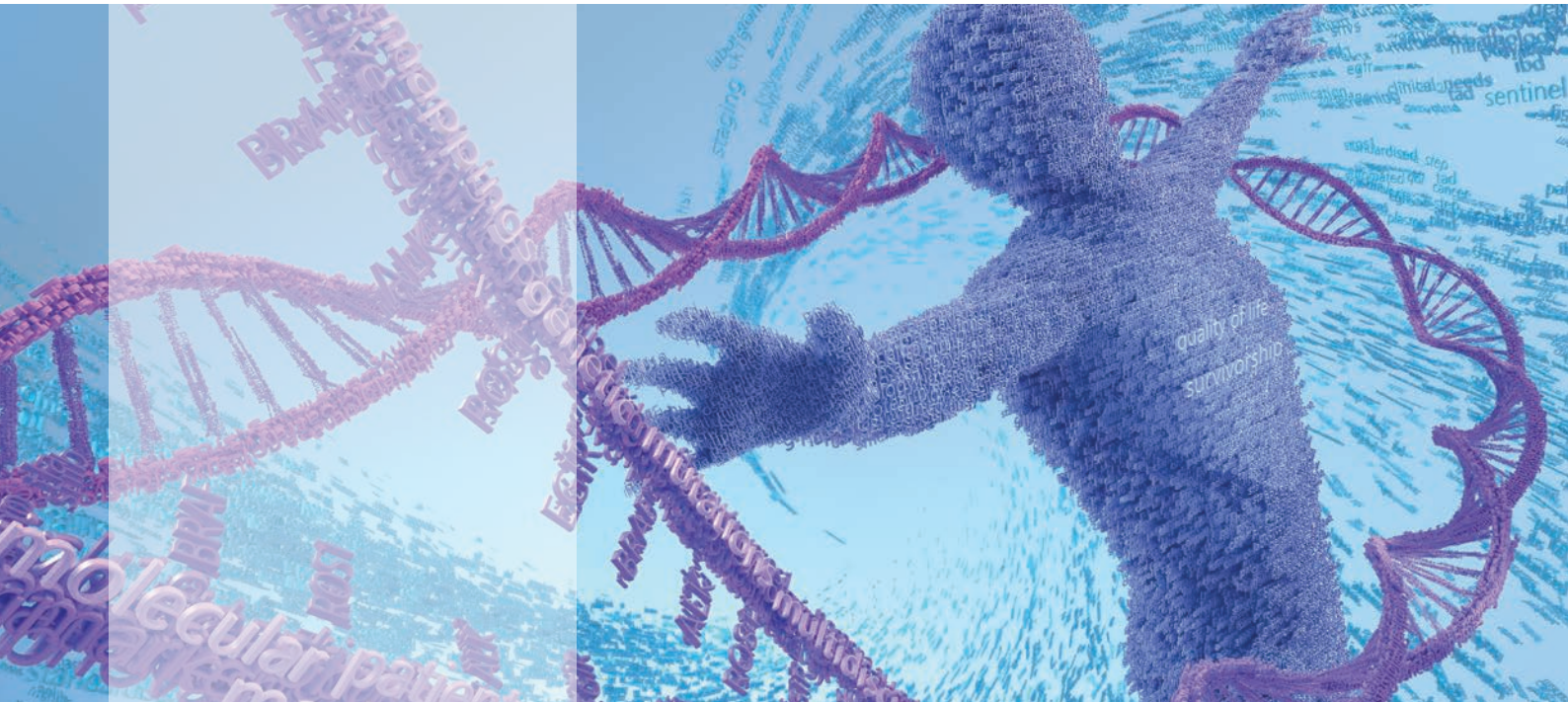


Comprehensive molecular and genomic solutions



OSNA

As fast as frozen section, as sensitive as ultra-staging – definitive molecular nodal staging within 30 min.



MammaTyper®

Precise quantification of key biomarkers in breast cancer for comprehensive molecular subtyping based on RNA expression.



CytoCell®

High quality, reliable and easy-to-use DNA probes for fluorescence *in situ* hybridisation (FISH).



CytoSure® (RUO)

Bespoke microarray products for cytogenetics, cancer and rare diseases. Optimised to provide the most relevant content and sensitivity.



SureSeq™ (RUO)

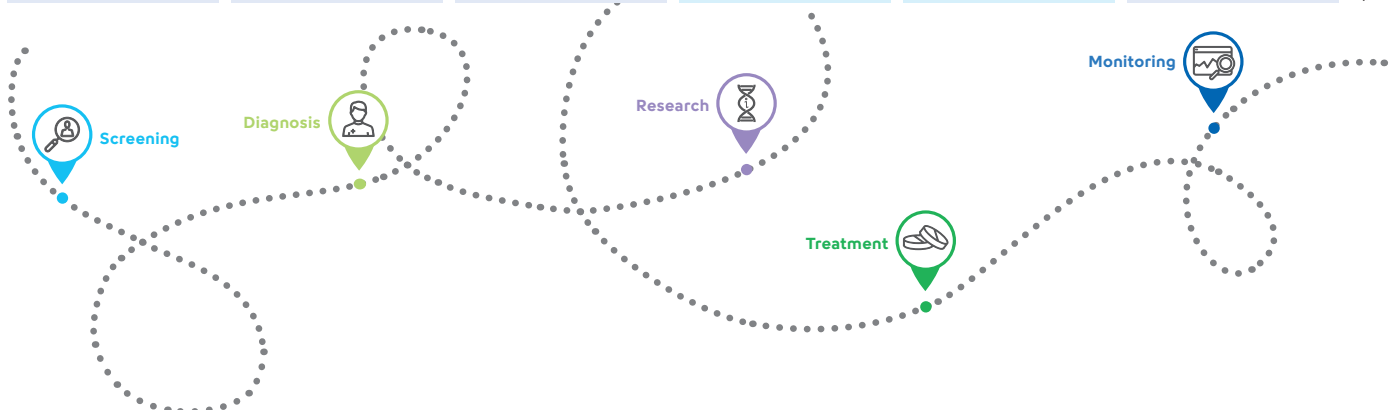
Expert-curated NGS products for haematological cancers and solid tumours. Unparalleled coverage completeness and uniformity.



Plasma-SeqSensei™

Master the sensitivity in ctDNA detection – liquid biopsy on an NGS level.

* Research use only



Product features at a glance



	OSNA RD-210	MammaTyper®	CytoCell®	CytoSure®	SureSeq™	Plasma-SeqSensei™
Sample type	Lymph node (RNA)	FFPE (RNA)	Blood/FFPE/ bone marrow/ prenatal (DNA)	Blood/FFPE (DNA)	Blood/FFPE/ bone marrow (DNA/RNA)	Plasma (ctDNA)
Technology (platform)	RT-LAMP (RD-210)	RT-qPCR	FISH	Microarray (Agilent or Innopsys)	NGS (Illumina)	NGS (Illumina)
Turnaround time	30 minutes	5 – 6 hours	2 hours – 2 days	2 days	3 – 4 days	2 days
Hands-on time	10 minutes	1.5 hours	15 – 45 minutes	2 hours	7 hours	8 days
Customisation	–	–	CytoCell myProbes®	CytoSure® Custom Designed aCGH Arrays	SureSeq™ myPanel	–
Regulatory landscape	CE-IVD	CE-IVD	CE-IVD, RUO	RUO	RUO	CE-IVD, RUO
Software	Built-in	MammaTyper® Report Generator	–	CytoSure® Interpret	Interpret	Plasma-SeqSensei™ software
Disease area	Oncology	Breast cancer Oncology	Cytogenetics Haemato-oncology Oncology	Cytogenetics Rare diseases Oncology	Haemato-oncology Oncology	Oncology
Get more information by scanning the QR code						

Glossary

NGS: Next Generation Sequencing, **FISH:** Fluorescence In Situ Hybridisation, **FFPE:** Formalin Fixed Paraffin Embedded, **RT-LAMP:** Reverse Transcription Loop-Mediated Isothermal Amplification, **ctDNA:** Circulating tumour DNA

OSNA RD-210: For laboratory professional use only. Use in diagnosis of lymph node metastasis and aid to diagnosis of the size of metastasis and metastases burden in the lymph node(s).

MammaTyper®: For laboratory professional use only. The MammaTyper® kit shall only be used in conjunction with the dedicated software. It is indicated for use by physicians along with other clinicopathological factors.

Plasma-SeqSensei™: For laboratory professional use only. The kits shall only be used in conjunction with the dedicated software to achieve their intended use. The information generated shall never be the sole determinant for taking medical decisions.

CytoCell® FISH probes: For laboratory professional use only. Not intended for use as stand-alone diagnostics or companion diagnostics. Therapeutic action should not be initiated on the basis of the FISH result alone.

CytoCell® and myProbes® are registered trade marks of CytoCell Limited.

CytoSure®, SureSeq™ and myProbes®: For Research Use Only. Not for diagnostic procedures.

OGT™, CytoSure® and SureSeq™ are trade marks of Oxford Gene Technology IP Limited.

Distributor EMEA: Sysmex Europe SE · www.sysmex-europe.com
 Manufacturer OSNA RD-210: Sysmex Corporation · www.sysmex.co.jp
 Manufacturer MammaTyper®: Cerca Biotech GmbH · www.cercabiotech.com
 Manufacturer Plasma-SeqSensei™: Sysmex Inostics · www.sysmex-inostics.com
 Manufacturer CytoCell®: CytoCell Limited · www.ogt.com
 Manufacturer CytoSure® and SureSeq™: OGT · www.ogt.com

The products listed may not be available for sale in all countries. Please contact your Sysmex representative for availability. You will find your local Sysmex representative's address under www.sysmex-europe.com/contacts

www.sysmex-europe.com/lifescience